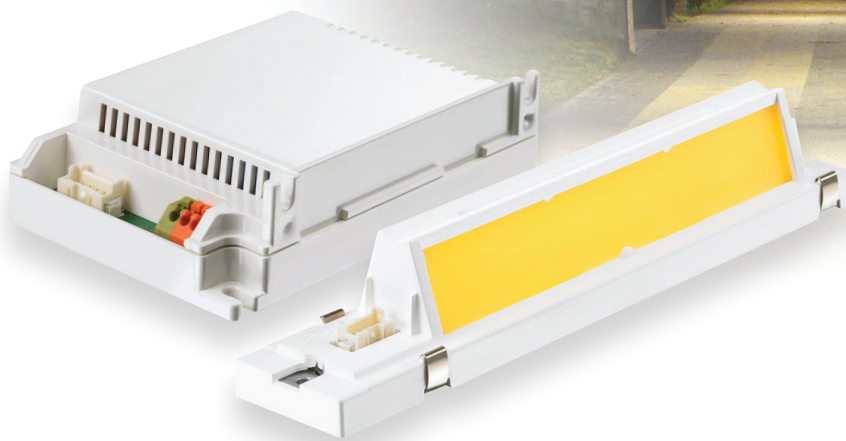


OUTDOOR

# Philips Fortimo LED Linear Light Module System

Breakthrough energy savings with high quality illumination



## Features

- Patented remote phosphor technology
- CE approved class II system
- 5 year limited warranty on system
- 1100-4500lm packages, available in 3000K and 4000K
- Multiple dimming options

## Benefits

- High efficiency and energy saving lighting
- Future-proof, convenient modules
- Extremely reliable lighting systems L70 @ 50k hours
- Specified to meet the needs of the lighting industry
- Added system control, additional energy savings

**Applications:** Outdoor lighting, fluorescent replacement, wall-washing and general ambient illumination

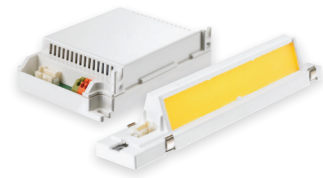
# PHILIPS

**FUTURE**  
**Lighting Solutions**  
*Making LED Lighting Solutions Simple™*

[www.FutureLightingSolutions.com](http://www.FutureLightingSolutions.com)

# Philips Fortimo LED Linear Light Module System

Breakthrough energy savings with high quality illumination



## 1. LED Light Modules

These future-proof modules were designed for ease of integration into existing or new fixtures. They deliver high quality illumination, perfectly mixed light, uniform colors and consistency and with enough lumens to compete with conventional light sources.

Description	Initial Lumens	CRI	CCT (K)	System Input Power (W)	System Efficacy (Lm/W)	Input Voltage (V)	Lumen Maintenance @ 50k hrs (%)	Part Number
Fortimo LED LLM 1100lm 13W/730	1100	70	3000	16	69	220-240	100	929000634903
Fortimo LED LLM 1100lm 11W/740	1100	70	4000	14	79	220-240	100	929000616103
Fortimo LED LLM 1800lm 20W/730	1800	70	3000	24	75	220-240	100	929000635003
Fortimo LED LLM 1800lm 18W/740	1800	70	4000	22	82	220-240	100	929000615903
Fortimo LED LLM 3000lm 34W/730	3000	70	3000	40	76	220-240	100	929000611403
Fortimo LED LLM 3000lm 33W/740	3000	70	4000	38	76	220-240	100	929000611303
Fortimo LED LLM 4500lm 53W/730	4500	70	3000	59	76	220-240	100	929000611203
Fortimo LED LLM 4500lm 50W/740	4500	70	4000	56	80	220-240	100	929000611103

## 2. Driver Solution

The highly efficient Xitanium LED drivers are specifically designed for the LLM modules. These drivers have various features including dimming, thermal foldback, fixed output and a 12V output which can be used with Nuventix SynJet among other options. Each LLM light module requires one Xitanium LED driver.

Description <sup>1</sup>	Input Voltage (V)	Dimming	1100lm	1800lm	3000lm	4500lm	Part Number
Xitanium 35W Otd	230	Non-Dimming	✓	✓			929000634003
Xitanium 35W Otd	230	Lumistep 6	✓	✓			929000634103
Xitanium 35W Otd	230	Lumistep 8	✓	✓			929000634203
Xitanium 75W sXt	230	1-10V			✓	✓	913701217502

<sup>1</sup> Otd = Outdoor, sXt = Extreme

## 3. Cable Solution

As an important part of the Fortimo system, this cable has been specifically designed to maintain the quality of the overall system as well as ensuring the system warranty.

Description	Part Number
Fortimo LLM cable 25cm	929000483303

## 4. Thermal Management Solutions

To optimize the lifetime and amount of light from the Fortimo LED LLM system it must operate within specified temperature limits. We strongly recommend customers conduct a full thermal analysis of the unit when designing a system. Please speak to your local Future Lighting Solutions representative about design support we may be able to offer.



Note: Current specifications, subject to change. Please check our website for the latest specifications.