

Intelligent Lighting Platform

Synapse Wireless Technology



Making LED Lighting Solutions Simple™

www.FutureLightingSolutions.com

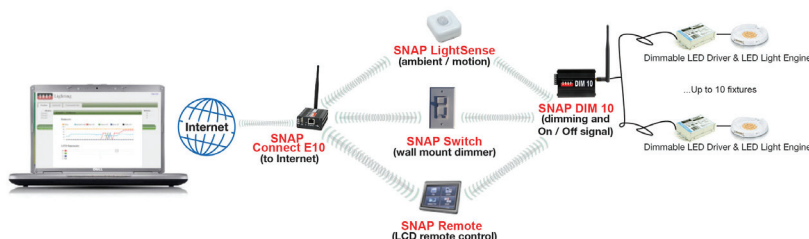
Synapse Internet-Controlled Wireless Lighting System

Deploy and remotely manage LED Lighting locally or over the Internet

Through simple Plug & Play products, Synapse offers complete, reliable and easy to install wirelessly controlled lighting systems for indoor and outdoor applications. The Synapse Wireless Lighting Control System is an integrated set of products that are reliably networked leveraging the SNAP Network Operating System. All of these products can easily be implemented into your existing or new lighting installations and become instantly operational – no predetermined routing or complex network programming is needed. It simply works.

Control and Monitor Anywhere in the World

Flexible and informative web-based GUI enables secure access to the lighting system from any Internet connection allowing remote control of any individual or group of luminaires. The GUI also enables the creation and modification of pre-programmed schedules or scenes.



Wireless Lighting System Features

Flexibility

- Based on the Synapse SNAP Network Operating System
- Internet enabled for mobile or desktop access
- Easy to integrate into new or existing lighting installations

Security

- Secure login for specific users and locations

Map-based Navigation

- Map visual for country, state, city, etc. with text list of available locations
- List of recently visited locations, search dialog and zoom-and-pan tool

Floor Plan-based Interface

- Individual floor-plans can be uploaded
- Zone and fixture locations can be selected, customized and updated
- Create and modify scenes and schedules
- Navigation tree allows hierarchical selection of managed entities

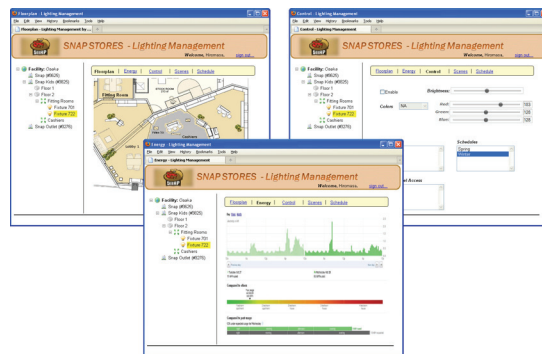
Manual Light Control

- Remotely access individual zones and fixtures for manual control, including On/Off, Dimming and Color
- Temporary override of scenes and scheduled events

Automated Control

- Motion controlled or timed dimming
- Automated adjustment to ambient light
- Zone control and failure detection

Part Number	Description
LP400-001	SNAP Connect E10 Module (HW) + one year annual subscription to SNAPLighting.com (SW)
LP410-001	SNAP Connect E10 Module (HW)
LP480-001	Year 2 and onward annual service license for SNAPLighting.com (SW) - free updates
LP485-001	Local site-resident application with SNAPLighting.com functionality (SW) - no Internet access
LP001-001	SNAP DIM-10 for dimming and full on/off for 1-10 fixtures
LP201-002	SNAP LightSense wireless lighting detection of ambient lighting conditions and someone's presence in the room
LP300-000	SNAP Remote handheld, wireless, color touch-screen remote control
LP301-001	SNAP Switch wireless, wall-mount, on/off and dimmer switch
LP500-001	SNAP DMX replaces cabling between controllers and lights - 96 channels (North America)
LP501-001	SNAP DMX replaces cabling between controllers and lights - 96 channels (Worldwide)
LP511-001	SNAP DMX Pro replaces cabling between controllers and lights - 512 channels, RDM
LPEK1000	Intelligent lighting kit for test sites and demos to dim and control lights using PWM or 0-10V dimmable LED drivers



NORTH AMERICA
1-888-LUXEON2
Americas@FutureLightingSolutions.com

ASIA
+800-Lumileds
Asia@FutureLightingSolutions.com

EUROPE
00-800-44FUTURE
Europe@FutureLightingSolutions.com

JAPAN
+81-0120-667-013
Japan@FutureLightingSolutions.com

FUTURE
Lighting Solutions
Making LED Lighting Solutions Simple™

www.FutureLightingSolutions.com