

CUBILUX MIXING CHAMBER

CUBILUX MC-100-LR-PC-6

Highest performance

High reflectivity results in the highest efficacy and uniformity.

Stability over lifetime

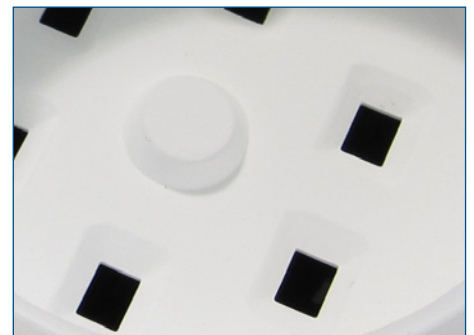
Lasting high reflectivity guarantees constant performance and maximum lifetime.

Ready to use

Cubilux is a proven solution.

System solution

Joint product development with Intematix.



Product Nomenclature

The part number designation for mixing chambers is explained as follows:

MC-qqq-xxx-yy-z

Where:

Q–Designates the model version

X–Designates the corresponding ChromaLit shape and size

Y–Designates the corresponding ChromaLit substrate material

Z–Designates the number of LED openings

Example:

MC-112-R34-PC-9 represents a mixing chamber with version number 112, compatible with the 34 mm round, polycarbonate remote phosphor plate and has 9 LED openings.

Product Data

I. Optical

Diffuse reflection	99.2 %
Specular reflection	0 %
Reflection spectrum	380 - 2000 nm
Reflection type	Lambertian (100%)
Reflection curve	Flat

II. Thermal

Coefficient of Expansion	$6 \times 10^{-6}/^{\circ}\text{C}$
Thermal Conductivity	1.0 W/m $^{\circ}\text{C}$
Max. application temperature	< 1000 $^{\circ}\text{C}$

III. Mechanical

Porosity	26 % by vol.
Density	1.70 g/cm 3
Flexural Strength	25 MPa
Compressive Strength	275 - 300 MPa

IV. Electrical

Dielectric constant	6
Electrical resistivity	$10^{12} - 10^{14} \Omega/\text{cm}$

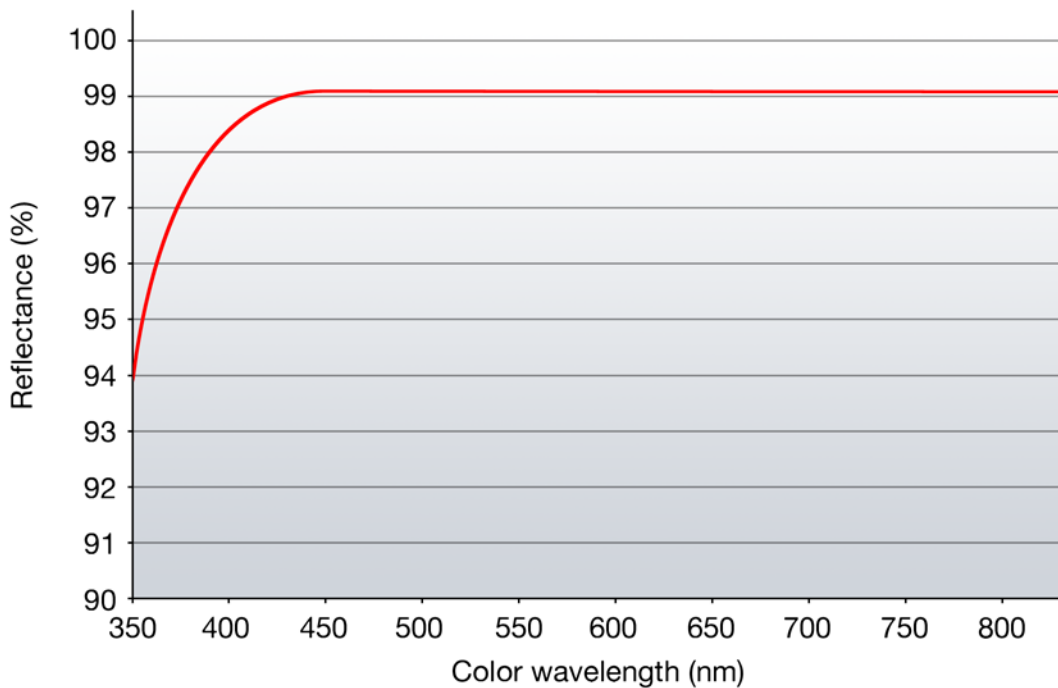
V. Production

Tolerances	$\pm 0.10 \text{ mm} (\leq 4 \text{ mm})$
	$\pm 0.15 \text{ mm} (\leq 8 \text{ mm})$
	$\pm 0.20 \text{ mm} (\leq 20 \text{ mm})$
	$\pm 1,0 \% (> 20 \text{ mm})$

Minimum thickness ^{*)}	1.50 mm
Maximum length ^{*)}	120.00 mm
Maximum surface area ^{*)}	500.00 mm 2

^{*)} Cubilux custom made models

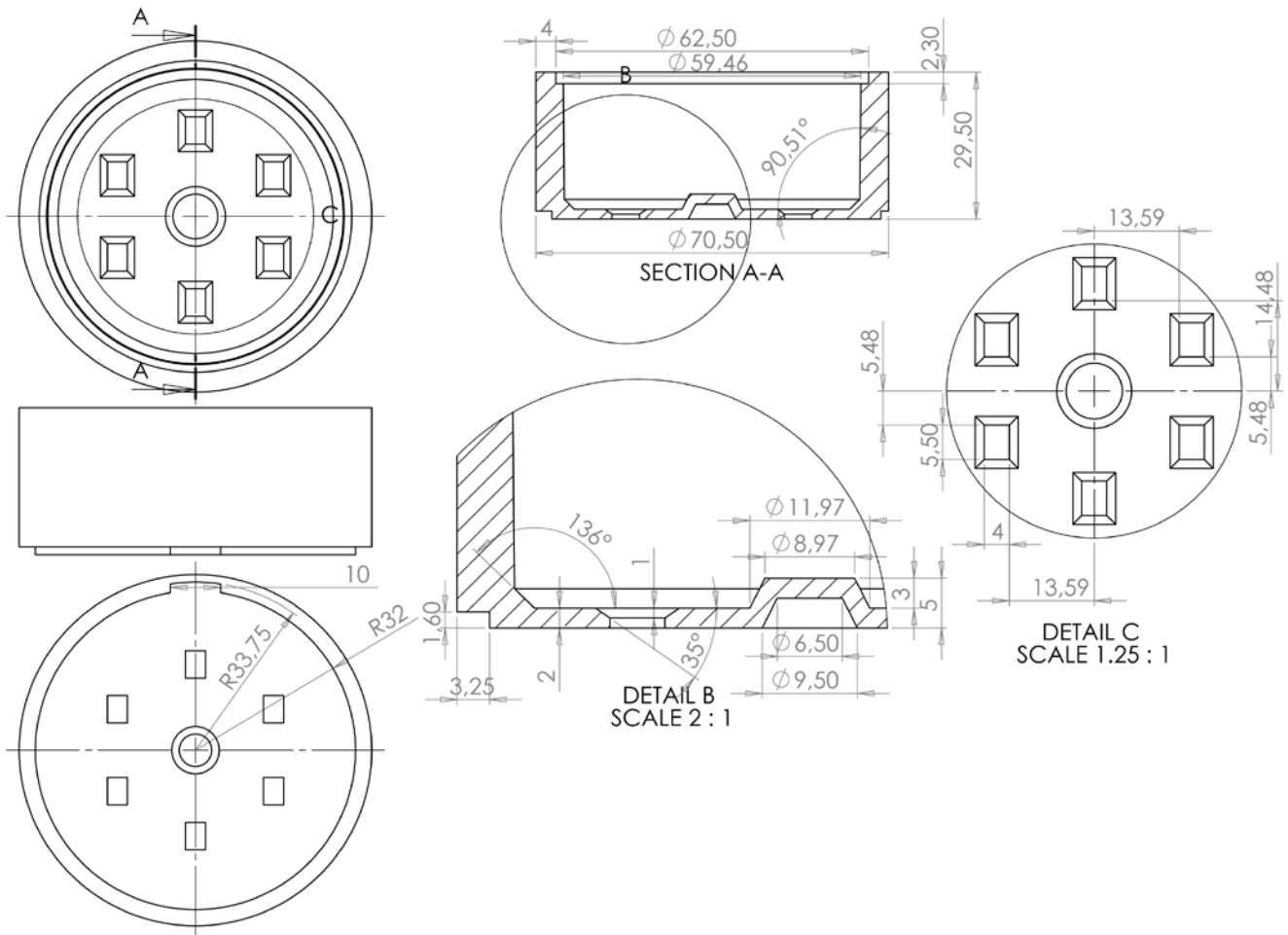
Reflectance



CerFlex International BV

Dwarsdijk 3 • 5705 DM Helmond • The Netherlands
 +31(0)492 780 027 • info@cerflex.com • www.cerflex.com

Dimensional drawing



Notes:

1. Drawings not to scale
2. All dimensions are in millimeters
3. All dimensions without tolerances and for reference only